



ARPP-21 Polyclonal Antibody

Catalog No	YP-Ab-03717
Isotype	IgG
Reactivity	Human;Mouse
Applications	WB;IHC;IF;ELISA
Gene Name	ARPP21
Protein Name	cAMP-regulated phosphoprotein 21
Immunogen	The antiserum was produced against synthesized peptide derived from human ARPP21. AA range:211-260
Specificity	ARPP-21 Polyclonal Antibody detects endogenous levels of ARPP-21 protein.
Formulation	Liquid in PBS containing 50% glycerol, 0.5% BSA and 0.02% sodium azide.
Source	Polyclonal, Rabbit,IgG
Purification	The antibody was affinity-purified from rabbit antiserum by affinity-chromatography using epitope-specific immunogen.
Dilution	WB: 1/500 - 1/2000. IHC: 1/100 - 1/300. ELISA: 1/5000.. IF 1:50-200
Concentration	1 mg/ml
Purity	≥90%
Storage Stability	-20°C/1 year
Synonyms	ARPP21; TARPP; cAMP-regulated phosphoprotein 21; ARPP-21; Thymocyte cAMP-regulated phosphoprotein
Observed Band	80kD
Cell Pathway	Cytoplasm .
Tissue Specificity	Isoform 2 is expressed in brain. Isoform 1 is present in immature thymocytes (at protein level).
Function	function:Isoform 2 may act as a competitive inhibitor of calmodulin-dependent enzymes such as calcineurin in neurons.,PTM:Isoform 1 is methylated by CARM1 in immature thymocytes.,PTM:Phosphorylation at Ser-56 favors interaction with CALM1.,similarity:Contains 1 R3H domain.,subunit:Interacts with CALM1.,tissue specificity:Isoform 2 is expressed in brain. Isoform 1 is present in immature thymocytes (at protein level),.
Background	This gene encodes a cAMP-regulated phosphoprotein. The encoded protein is enriched in the caudate nucleus and cerebellar cortex. A similar protein in mouse may be involved in regulating the effects of dopamine in the basal ganglia. Alternate splicing results in multiple transcript variants. [provided by RefSeq, Jun 2012],



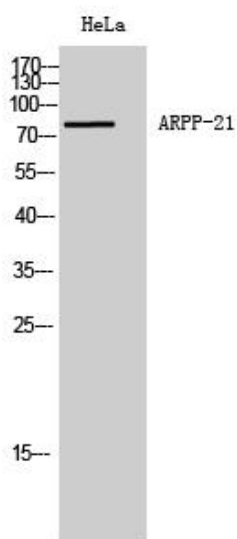
matters needing attention

Avoid repeated freezing and thawing!

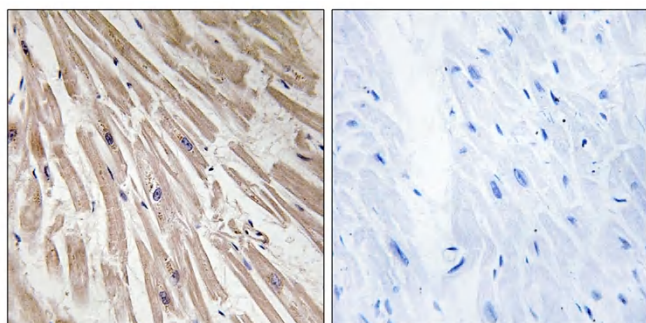
Usage suggestions

This product can be used in immunological reaction related experiments. For more information, please consult technical personnel.

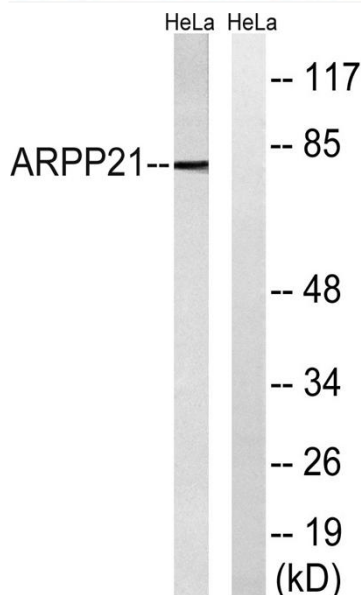
Products Images



Western Blot analysis of HeLa cells using ARPP-21 Polyclonal Antibody diluted at 1:1000



Immunohistochemistry analysis of paraffin-embedded human heart tissue, using ARPP21 Antibody. The picture on the right is blocked with the synthesized peptide.



Western blot analysis of lysates from HeLa cells, using ARPP21 Antibody. The lane on the right is blocked with the synthesized peptide.